



G2 KB-600-MULTI-S



Multi “Skinny” Base Assembly & Use



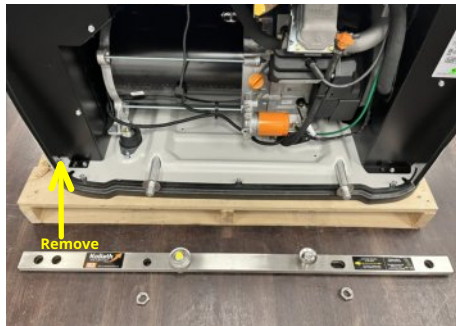
Tools needed
10mm socket w/wrench

Have a question?
800.456.3198 sales@koliath.net

Rev3.0 9/21/2025



G2 KB-600-MULTI-S



STEP 1: Remove front generator panel and insert lifting rods through generator base lifting holes. Note the rods are shipped with a nut and one washers for each end. Position base rails based on which end you plan to lift from (see label on base).



STEP 2: Attach rails to lifting rods. First slide on one washer on each end of the rods, then align the base rail holes with the round base rods, and loosely attach a nut on each rod end. Finish by hand tightening all 4 nuts. See hole chart for generator being moved.



STEP 3: Line up handle with base. The handle must always approach the base fulcrum (bolt with yellow label) from the latch end of the base. Once the fulcrum is fully engaged onto both of the handle's front hooks, press down on the handle with enough force to lock both of the rear latches. Then you may move the load. If you need to approach the generator from the other end, just swap the side rails to the other sides.

CAUTION: It is best practice to lift the generator from the pallet and leave it with the handle fully engaged until you place the generator on the pad! IF YOU DON'T, the handle may come in contact with the lid slightly due to the new lid's width.



G2 KB-600-MULTI-S

How to lift the Generac 3" and 4" Genpad cement pads

TIP: Plan out which way you want the pad to face before attaching the base so you approach the site from the easiest direction.

A) LIFT FROM THE FLOOR

Place the pad on thin scraps of wood to raise the pad just height enough to get the lifting hooks under the pad edges.



B) LIFT FROM A PALLET

Place two 2x6's on both sides of pallet to raise the height of the cart enough to pick the pad up off the pallet.



FIRST STEP In both cases, place the assembled "Skinny" base and parts over the pad as shown. Note the hole locations used for the rods, and that the base is centered on the pad from side to side only. Not also that the base should be placed closer to the back end of the pad. This is the end you plan to approach the base to pick it up from with the handle, and it is to minimize tire rub if the base is not perfectly centered side to side.



SECOND STEP, install all 4 pad hangers as shown. It helps to lift up slightly on the steel base.



G2 KB-600-MULTI-S

How to lift the Generac 3" and 4" Genpad cement pads

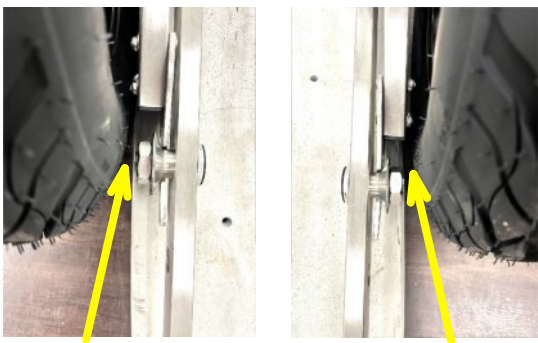


THIRD STEP, slide the locking wedges under the center of each bar hard enough to lock in the position of the base over the pad. NOTE the orientation of the locking wedges in this picture are for a 4" Generac pad. For the 3" pads, flip the locking wedges over.

DO NOT ATTEMPT TO LIFT THE PAD WITHOUT BOTH OF THE WEDGES FIRMLY IN PLACE.



FORTH STEP, approach the pad with the cart handle level to the ground. This is so the handle's front fulcrum hooks can get over the pad lifting hooks. Once the handle's front fulcrum hooks are a few inches from the base fulcrum bolts, lift the handle and slide the handle's hooks to fully engage the fulcrum bolts. Then press down on the handle to lock in the handle's rear latches.



NOTE PAD SHOULD NOT TOUCH EITHER WHEEL. There should be about $\frac{1}{4}$ to $\frac{1}{2}$ " clearance on both sides. Reposition the base on top of the pad if either wheel touches. Also make sure pad wedges are firmly wedged into place to keep the pad from moving around while transporting.